

# MILLWOOD NEWS

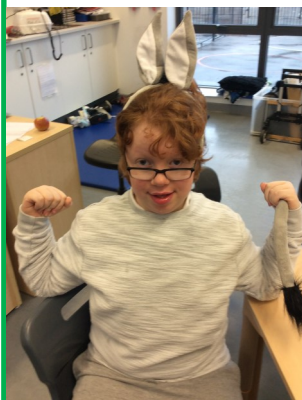
ISSUE No 375

NEWSLETTER DATE : FRIDAY 14TH December 2018



## CHRISTMAS PERFORMANCES - NED'S FIRST CHRISTMAS

Thank you so much to all of you who attended the Christmas Shows. I know this meant getting time off work and it is really appreciated. I realise not everyone will have been able to do this and hopefully, we can give you a flavour of the performances in this



newsletter. I was so proud of each and every child because every single one of them, without exception, excelled - even if it was just getting to the hall doors, and those who didn't make it onto the stage had been magnificent during rehearsals so they did themselves proud anyway! The singing, dancing, listening, acting, signing, working as a team, dealing with 'butterflies', joining in, getting into character - all magnificent.

If you are reading this with your child, tell them they were absolutely fantastic.

We have had some lovely comments which staff and pupils really appreciate.

Some of you were kind enough to ring into Hits Radio saying how much you had enjoyed the Millwood Christmas performances - thank you!

We had some special guests this year including from the School and College Transport Team, from Human Resources, from the Children's Disability Service, from Fairfield Primary School, and from Bury Football Club Executive. We would like to thank them very sincerely for being a part of our Millwood family at Christmas. I am sure I speak for you all when I say how much this means to everyone to see how much our children are valued by others in the Bury community.

Once again, we would like to thank our governing body for their attendance (Caroline and Gulshan) and to Caroline for running the raffle.

On your behalf, can I thank the Millwood staff for their dedication in rehearsing the children - knowing your part inside out gives you the confidence to get up on stage and perform, and this is certainly something which was a great success.

Thanks to the office team and to premises staff. Thanks to Terri for AV and ICT support, and last, but never least, to Jill Tierney, our fabulous director who manages to pull everything together year after year to ensure you see a Christmas performance which you will remember for years to come.





**DONATIONS AND RAFFLE** - total raised £299.58

A huge THANK YOU to all of you for your very generous donations.

**BURY MARKET SINGING AND SIGNING-raised £106.84**

Message from Katie H and Shirley

Can we please say a HUGE THANK YOU to all the children and staff who performed at Bury Market. The singing and signing was amazing and the support we received from the public was incredible. People commented on how well the children sang and were impressed with our signing. Fabulous work by everybody involved, especially the children!

**CHRISTMAS ACTIVITIES**

Just for information, Father Christmas is taking some time out from his busy Christmas schedule to visit all the children on Monday afternoon on his sleigh. He will then give out presents from class teams to all the children next Tuesday.

**BURY FC PLAYER VISIT**

Father Christmas has given the Bury FC players special permission to give out presents to all the children. A very big thank you and a merry Christmas to Karl, Cherelle and everyone at Bury FC and the Trust.



**CAROL CONCERT**

You are all invited to our annual Christmas Carol Concert which takes place on Wednesday 19 December. Please let the office know if you are coming so we can make sure we have enough seats or at least spaces for you to stand.

**SCHOOL CLOSURES FOR THE PUPILS ON WEDNESDAY 19 DECEMBER AT THE NORMAL TIME**



**SCHOOL RE-OPENS FOR THE PUPILS ON MONDAY 7 JANUARY AT THE NORMAL TIME**

May we wish you a very merry Christmas and a happy New Year in 2019!



**SPROUT REPORT**

The beautiful sprout harvest has been gathered in and delivered to our wonderful cook Michelle ready for the Christmas Dinner. Well done again to all the Millwood gardeners.





## **COMMUNICATION WITH SCHOOL** **- IMPORTANT**

Please would parents and carers direct all email communication to the main school email address -

[millwood@bury.gov.uk](mailto:millwood@bury.gov.uk)

Staff email addresses are for secure school-related use only and staff are unable to answer emails from unsecured email addresses. Thanks for your co-operation.

## **BAGS 2 SCHOOLS**

Thank you to everybody who donated clothes and household items for our bags to school project. We were overwhelmed by the kindness of parents/carers, staff and children at this particularly busy time of year. These items were collected on Friday 30th November and we raised £60 for school.



## **DINNER MONEY REMINDER**

All dinner money and arrears must be paid by first thing Monday morning.



Hi Helen

Just a quick email to say thank you very much for inviting me to your Christmas play, it was an absolute joy.



It is sometimes hard to remember why you are doing your job so it is always good to be reminded that the bottom line in everything we do, is the children. To see them enjoy themselves so much is a very timely reminder.

Thank you again, a real pleasure.

Dave Barlow

HEAD OF HUMAN RESOURCES

DEPARTMENT OF CHILDREN, YOUNG PEOPLE & CULTURE



## **STARS OF THE WEEK**



### **EYFS/KS1**



Maxwell F for good work throughout the week.



### **KS1/KS2**



Megan C for completing the snowman trail and walking all the way around and smiling as she did it.



**Whitelow 1** This week in Whitelow 1 the festive spirit has descended. We performed wonderfully in our Christmas performance of Ned's First Christmas. We were excellent elves and did a marvellous job of helping Father Christmas



sort his presents. We have been making festive treats to share with our families and friends comprising Christmas confectionery: Christmas peppermint creams and chocolates. We also had time to make a personalised snow globe and Christmas cards.

**Whitelow 2** In Whitelow 2 this week the children have been developing their fine motor and mark-making skills as they have created some really lovely festive images. They were all superstars in the Christmas Show - very well done to the little herd of donkeys, and our kindly inn-keeper.



**Whitelow 3** This week we have been feeling very festive and we made everyone really proud in our Christmas show. It was amazing and we worked so hard, some of us were very tired



afterwards as we used up all our energy on entertaining! We have also been busy visiting the Snowman trail at the Lowry and entertaining the people of Bury with our friends in the singing and signing choir. Merry Christmas!

**Whitelow 4** were fantastic in our Christmas performance this week! They all enjoyed dancing and having a party on stage!



In class, we have been listening to a story about Christmas, where we decorated a tree and we wrapped presents! We also made snow using baking soda and shaving foam!



**Whitelow 5** took part in their first Christmas production this week at Millwood school. We were completely blown away by how well all of the children did! The singing, signing, dancing and acting was absolutely out of this world. It is hard to believe that these children have been in school for less than six months. Well done to everyone and thank you to all of our parents and carers for coming to support this wonderful event.





**Redvales 1** have had a lovely festive week! We were all fantastic in our show, and we really enjoyed performing. Back in class we have made lots of Christmas crafts, and we have a lovely sensory story called 'Sneezy the Snowman', we loved exploring the fake snow and warm and cold sensory trays.



**Redvales 2** Wow! We are so proud of all the children taking part in Ned's First Christmas



Performance! They were amazing! We have had a fabulous week doing lots of Christmassy things! Our favourite was making little snowmen using socks and rice to make

our table centrepiece for Christmas dinner. We have also been making Christmas decorations using salt dough and our handprints. We just need to paint them and add the glitter!

**Redvales 3** have been out and about in the community this week with the Singing and Signing Choir. We have performed on Bury Market and were AMAZING! Lots of people came to watch us and were very impressed! In class we have been busy making our calendars and Christmas cards. We also performed in our Christmas show as 'Strictly Come Dancers' and we were fantastic!



**Redvales 4** We've had an exciting week! Our singers and signers performed at the KS1 Christmas play on Monday and then we all performed

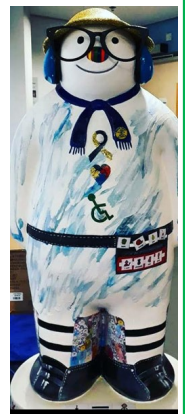


in our play on Tuesday, which was absolutely amazing! R4 teachers are so proud of all your children and thank you for your support. We have been doing lots of Christmas activities and art as well as practising our French and making a French Christmas card - Joyeux Noel! We have been to visit Radcliffe shops to look at all the decorations. While we were out we had a Christmas treat of a teacake for snack, followed by a McDonald's treat after our lunch! We are all looking forward to our Christmas dinner on Friday.

**Redvales 5** This week we have been looking at the story of the Grinch. We have used Christmas Dinner for messy food play and had fun wrapping presents to open. We then used different sized baubles to decorate our class Christmas tree.



**Redvales 6** have had a wonderfully festive week! We loved our Christmas trip to the Lowry on Thursday where we participated in a Snowman trail and got to see our very own "Greatest Snowman"! We were also very creative and produced some beautiful seasonal art work including cards and placemats. Next week we look forward to a visit from Santa, a carol concert and a Christmas party!





**Irwell 1** have been exploring the Christmas nativity and extending our reading skills. We had a great time in the Christmas show as Elves and are looking forward to our Carol concert next week.



**Irwell 2** have been taking part in lots of Christmas and Winter themed activities this week. We have explored a snowman and snow themed tuff tray, loving feeling the icing sugar snow as it fell on our hands. We have also been making Christmas themed chocolates for our DT project. We felt and tasted the chocolate when it was both solid



and liquid, yummy!

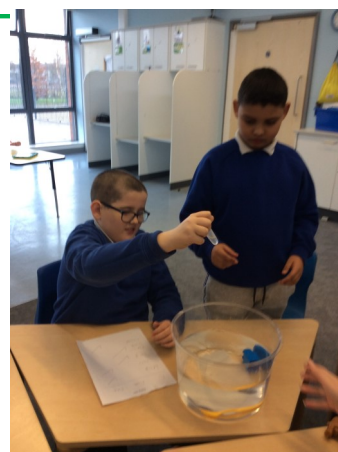
**Irwell 3** This week Irwell 3 have had lots of festive fun. We had our Christmas play which we were all superstars in,



we've made Christmas decorations and had lots of Christmas art. Logan and Hanzalah also represented us at the launch of our snowman in Manchester, they were brilliant representatives and had lots of fun.



**Irwell 4** What a busy week for Irwell 4! We all enjoyed the Christmas performance and doing lots of Christmas activities in maths, art and english. In science we have been learning about floating and sinking.



**Irwell 5** We have been having lots of fun with our Christmas activities in Irwell 5. We have written letters to Father Christmas as part of our English work and we enjoyed a brilliant class trip to Rochdale for McDonalds and bowling.



**Irwell 6** What a busy week we've had in Irwell 6. In our Maths lessons Jaikie and Declan have been sorting Christmas pasta shapes by colour and design. They then moved on to estimating how many they could hold in their hands and then counting to check.





# Manchester Art Gallery

## Welcome to Open doors 17th November

Open doors is a creative workshop especially for children and adults with autism and other social communication issues, their families and carers. We open our doors early so that you can come enjoy and explore art together as a family.

**This Month's session is : Saturday 15<sup>th</sup> December -9.15-11.15**

**Next month's session is: Saturday 19<sup>th</sup> January -9.15-11.15**

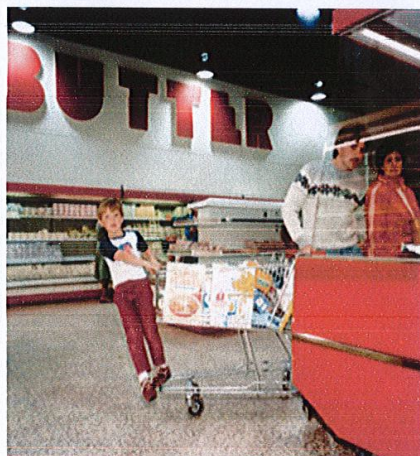
**And then ..... : Saturday 16<sup>th</sup> February -9.15-11.15**

Please feel free to contact katy McCall on 0161 235 8869 [k.mccall1@manchester.gov.uk](mailto:k.mccall1@manchester.gov.uk) if you have any questions

When you arrive at the Gallery, walk between the pillars and through the front door. Follow the arrows to the Martin Parr Exhibition.



Explore the gallery and make some art



Then come and discover the **Clore Studio** where there will be artist led activities  
Quiet room available if you need a moment out

Please feel free to contact katy McCall on 0161 235 8869 [k.mccall1@manchester.gov.uk](mailto:k.mccall1@manchester.gov.uk) if you have any questions or would like to find out more. The gallery will be open to the general public at 10. please visit [www.manchesterartgallery.org](http://www.manchesterartgallery.org)





Willwood School

# THANK YOU

YOUR POPPY SUPPORTS THE ARMED FORCES  
COMMUNITY PAST AND PRESENT

Thank you for supporting the Poppy Appeal.

Together we raised:

£ £99.72

To find out more about how your donation helps,  
visit [rbl.org.uk](http://rbl.org.uk)

Registered charity number: 219279



# Autism Sleep Clinic



Many children with autism have difficulty with sleep and this can have a devastating impact on families.

Help and advice is available at our workshop for parents and carers.

**When:** **Part 1:** Tuesday 15 January 2019  
10.00 am until 12.30 pm

**Part 2:** Tuesday 22 January 2019  
10.00 am until 12.30 pm

**Part 3:** Tuesday 29 January 2019  
Individual follow up appointments

**Where:** BURY2GETHER, Brandlesholme  
Community Centre, Brandlesholme Road  
Bury, BL8 1HS  
Postcode for satnav BL8 1JU

To book please contact:

**Together for Families**  
on 0161 286 4201 or email:  
[enquiries@togethertrust.org.uk](mailto:enquiries@togethertrust.org.uk)

**together trust**  
real differences for real lives  
Registered charity number 209872



# Friendly Café

Often, we go to a café and are sat near others who would like to have someone to talk to, but who may be afraid to ask, or want to respect others privacy.

The Friendly Café Scheme allows people the chance to have a drink and a chat with someone else in the same position.

The following cafes are taking part in this scheme so why not go along and meet someone new:

Bap (46 Haymarket Mill Gate Shopping Centre, Bury BL9 OBX – Mondays, Tuesdays, Thursdays and Sundays)

Automatic at The Met (Derby Hall Market Street, Bury BL9 OBW – 10am-12pm and 2pm-4pm, Mondays, Tuesdays, Fridays)

Tristians Traditional Family Restaurant (21 Princess Parade, Bury BL9 OQL – 930am-330pm, Mondays, Tuesdays and Fridays)



Best wishes  
Helen Chadwick  
Headteacher